

The Nativity of Our Lord

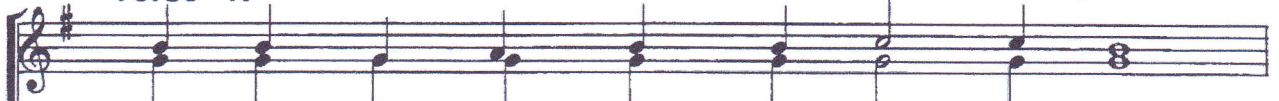
THE SECOND ANTIPHON

Psalm 111[112]:1-4

Traditional Chant,
harm. by D. Soloviev

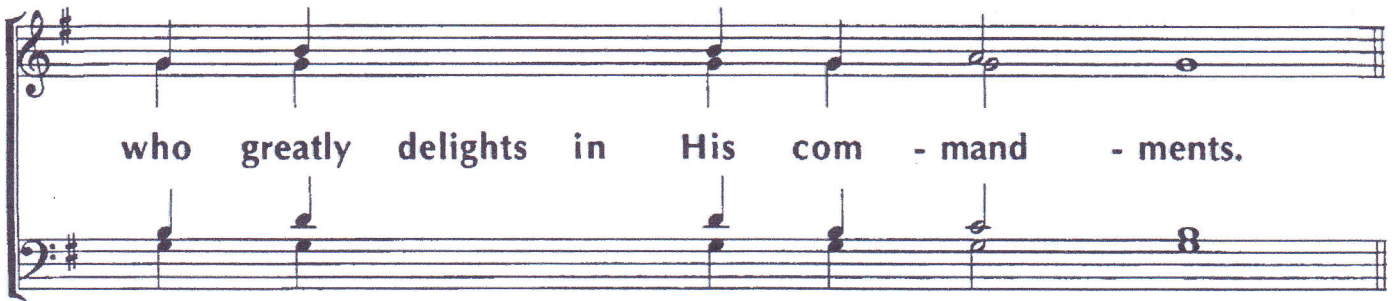
Verse 1.

Soprano
Alto



Bless - ed is the man who fears the Lord,

Tenor
Bass



who greatly delights in His com - mand - ments.

REFRAIN: *CHOIR and PEOPLE*



O Son of God, born of the Vir - gin, save us who

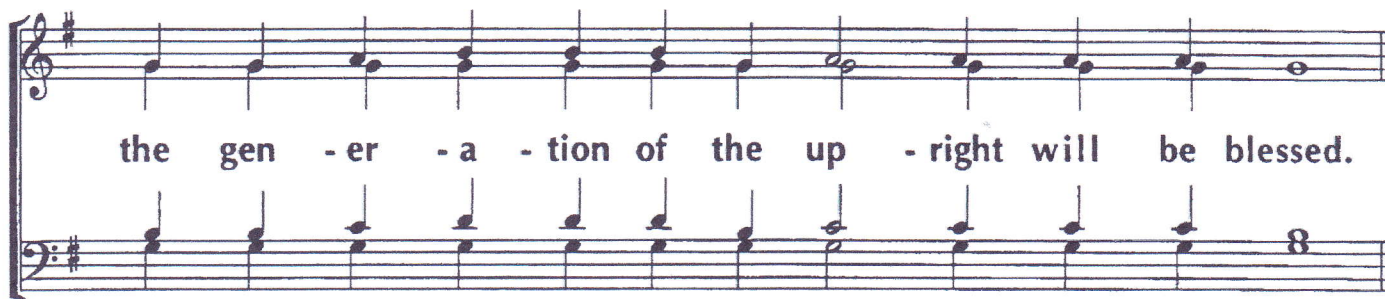


sing to Thee: "Al - le - lu - ia!"

Verse 2.

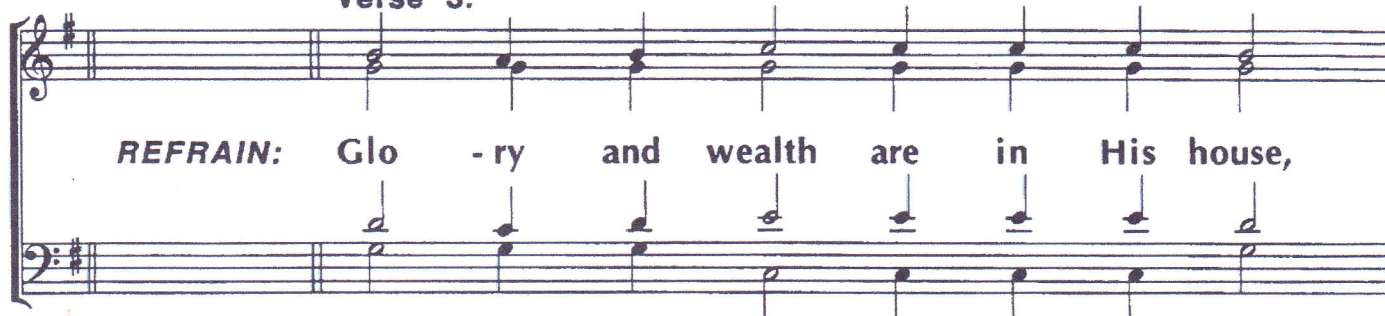


His de - scend - ants will be might - y in the land;

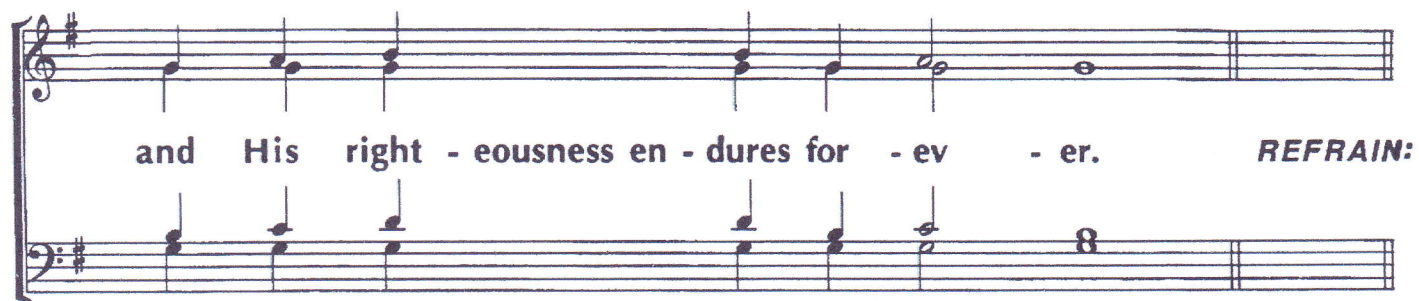


the gen - er - a - tion of the up - right will be blessed.

Verse 3.

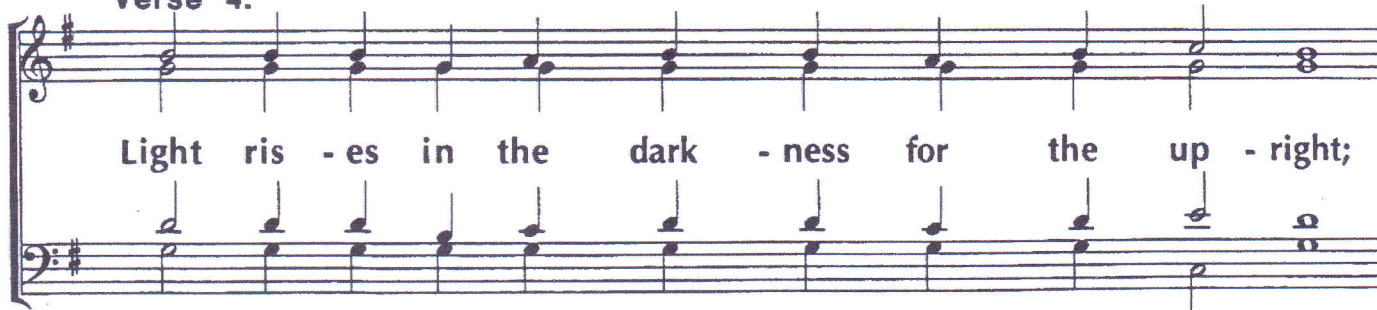


REFRAIN: Glo - ry and wealth are in His house,



and His right - eousness en - dures for - ev - er. *REFRAIN:*

Verse 4.



Light ris - es in the dark - ness for the up - right;

the Lord is mer - ciful, compassion - ate and right - eous.

Detailed description: This block contains the first part of the musical score. It consists of two staves: a treble clef staff on top and a bass clef staff on the bottom. Both staves are in the key of D major, indicated by a sharp sign on the F line. The treble staff contains a melody of quarter notes: D4, E4, F#4, G4, A4, B4, C5, and D5. The bass staff contains a bass line of quarter notes: D3, E3, F#3, G3, A3, B3, C4, and D4. The lyrics "the Lord is mer - ciful, compassion - ate and right - eous." are written below the treble staff, with hyphens under "mer - ciful" and "right - eous" to indicate syllable placement. A fermata is placed over the final note of the treble staff.

REFRAIN: Then: "Glory...now and ever..." and "Only-begotten Son"

Detailed description: This block contains the second part of the musical score, which is a refrain. It consists of two empty staves: a treble clef staff on top and a bass clef staff on the bottom. Both staves are in the key of D major, indicated by a sharp sign on the F line. The text "REFRAIN: Then: 'Glory...now and ever...' and 'Only-begotten Son'" is centered between the two staves.